

DRAWING NUMBER  
**53/54**

# MEADOW LAKE

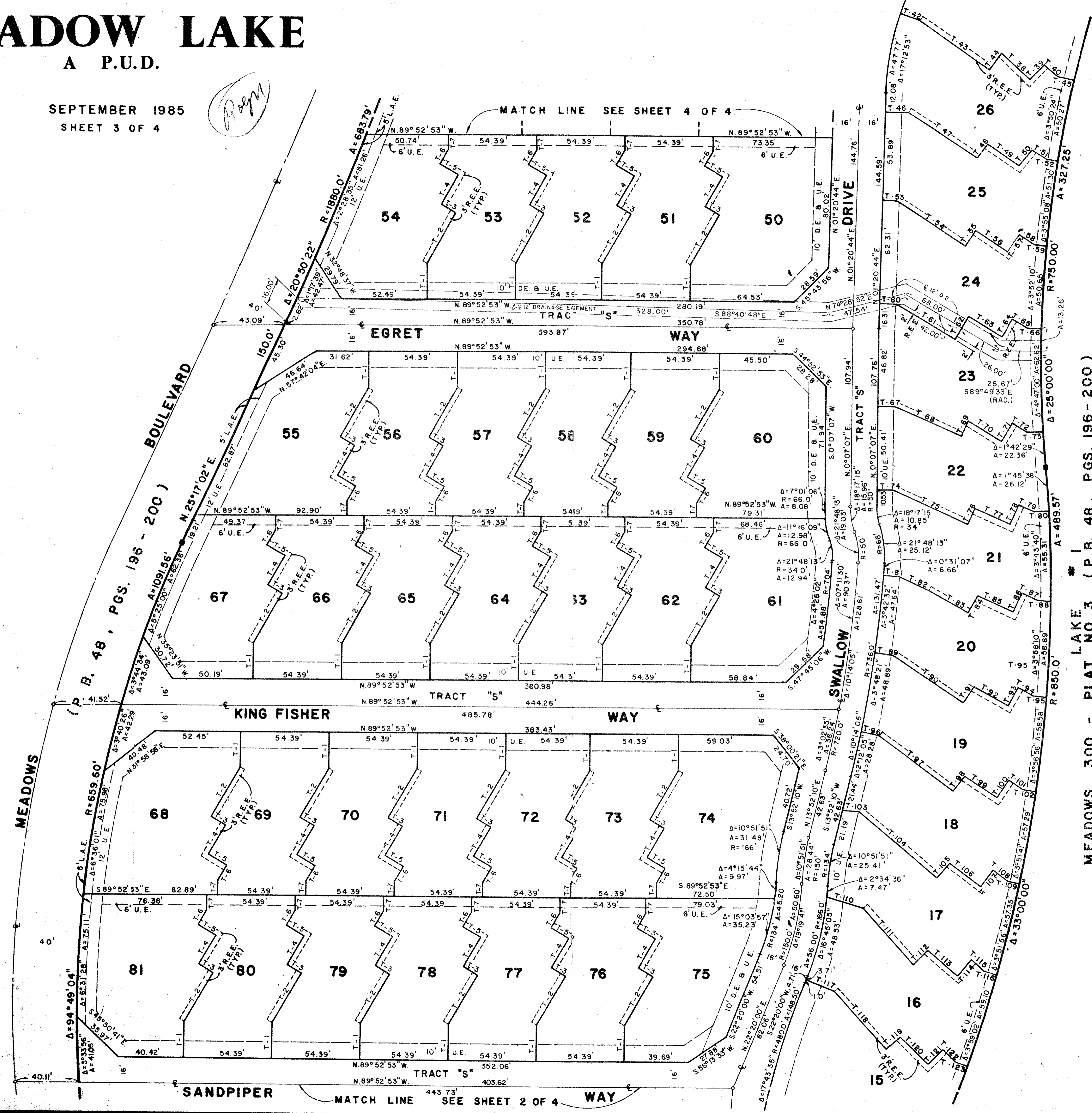
A P.U.D.

SEPTEMBER 1985  
SHEET 3 OF 4

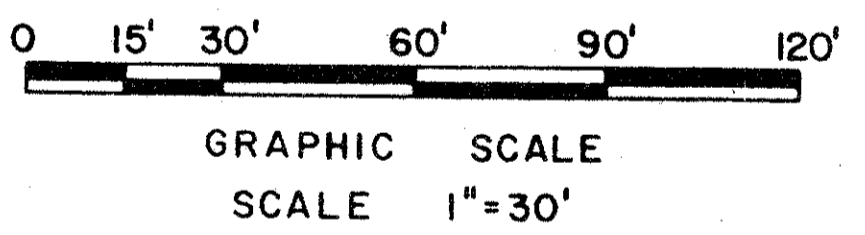
*REM*

STATE OF FLORIDA  
COUNTY OF PALM BEACH  
This Plat was filed for record at  
M. this \_\_\_\_\_ day of \_\_\_\_\_ 19\_\_\_\_  
and duly recorded in Plat Book \_\_\_\_\_  
on Page \_\_\_\_\_  
John B. Dunkle, Clerk Circuit Court  
By \_\_\_\_\_ D.C.

**54**



MEADOWS 300 - PLAT NO. 3 (P.B. 48, PGS. 196 - 200)



0483-000  
**MEADOW LAKE**  
**53/54**

THIS INSTRUMENT WAS PREPARED BY KENT W. EWING, JR.  
IN THE OFFICE OF EWING AND SHIRLEY, INC.  
3767 LAKE WORTH ROAD, SUITE 118  
LAKE WORTH, FLORIDA 33461

**EWING AND SHIRLEY, INC.**  
LAND SURVEYORS AND PLANNERS

3767 Lake Worth Road - Suite 118  
Lake Worth Florida 33461  
(305) 968-0421

DRAWING NUMBER

DRAWING NUMBER

DRAWING NUMBER

PLAN HOLD CORPORATION • IRVINE, CALIFORNIA  
RECORDED BY NUMBER 07548

PLAN HOLD CORPORATION • IRVINE, CALIFORNIA  
RECORDED BY NUMBER 07548

PLAN HOLD CORPORATION • IRVINE, CALIFORNIA  
RECORDED BY NUMBER 07548